



**BİLKİM**  
POLYWAX & PERFECTWAX

*Global Supplier...*



## CATEGORIES

**MODELING WAXES**

**LIGHT CURING MATERIALS**

**CASTING MATERIALS**

**CAD - CAM BLANKS**

**STUDY MODELS**

**ACRYLICS**

**MISCELLANEOUS**

**BEAUTY PRODUCTS**

**PRECISION CASTING WAXES**

**JEWELRY SECTION**



# MODELING WAXES



## POLYWAX (BASE PLATE WAX)

The Polywax base plate wax is perfect for general use for technicians who are looking for easy shaping, carving and modelling properties.

### ORDER NO

#### 500 GR

-PINK :300  
-RED : 310  
-PURPLE : 315

#### 2.250 GR

-PINK :300 / 5  
-RED : 310 / 5  
-PURPLE : 315 / 5



## PERFECT WAX (BASE PLATE WAX)

The Perfect wax base plate wax is suitable to create preliminary denture base. made of the best raw materials to guaranty consistent quality where low melting point and good elasticity

### ORDER NO

#### 500 GR

- PINK :200  
-RED : 210  
-PURPLE: 215

#### 2.250 GR

- PINK :200 / 5  
- RED : 210 / 5  
- PURPLE: 215 / 5



## ECO WAX (BASE PLATE WAX)

The Polywax Eco-wax is a very soft and flexible base plate wax designed for very cold regions.

### ORDER NO

#### 500 GR

-PINK : 100

#### 2.250 GR

-PINK : 100/5



## POLYWAX ORTHODONTIC WAX

The Polywax Orthodontic wax protects the gums and the linings of your cheeks and lips. It protects from the sharp parts of the orthodontic braces and wires. 50 cases/ box. Available in different flavour (uncented, strawberry, chocolate, mint, orange, cherry, banana etc...)

**ORDER NO: 321**



## POLYWAX UTILITY WAX

The POLYWAX UTILITY WAX, is developed to be used in the process of denture impression. It is applied to the impression tray to protect and preserve the periphery edge. It ensures a good transfer from the impression to the model.

**ORDER NO :**

ROUND : 345 (WHITE) - 345 /1 (RED)

SQUARE : 347 ( WHITE) - 347/ 1 (RED)

**UNIT WEIGHT:** 0,450 KG



## POLYWAX WAX SHEETS FOR ACCURATE BITE REGISTRATION

The Polywax Wax Sheets for Accurate Bite Registration are easy to use and allow you to build up your bite wafers. 28 sheets in one box.

**ORDER NO: 1981**



## POLYWAX WAX SHEETS WITH ALUMINA BASED

POLYWAX WAX SHEETS WITH ALUMINA BASED used for accurate bite. The wax is a composite material which contains powdered aluminum to increase integrity of the wax. 28 sheets in one box

**ORDER NO: 1982**



## DIPPING WAX IN BEADS FORM

The POLYWAX DIPPING WAX provides clean burnout with minimum shrinkage with its micro crystalline structure.

**ORDER NO :** 2600: Yellow  
2600/1: Red  
2600/2: Blue  
2600/3: Green

**UNIT WEIGHT:** 0,350 KG  
1 KG



## BITE REGISTRATION WAX

POLYWAX BITE REGISTRATION WAX stays stable when warm and when cooled down, giving excellent registration without any distortion and deformation. Comes in three forms, straight, curved and corrugated. Available in packaging of 500 gr or 1 kg.

**COLOR AVAILABLE:** RED-YELLOW-PINK

**ORDER NO:** ½ KG: 2001  
1 KG: 2001/1  
STRAIGHT TYPE



**ORDER NO:** ½ KG: 2000  
1 KG: 2000/1  
CURVED TYPE



**ORDER NO** 2002 : ½ Kg  
2002/1 : 1 Kg  
CORRUGATED TYPE



## DIAGONAL WAXES

A high-quality sculpturing wax used for all application. It has a high carving property with no shrinkage. Blue, Green, Yellow, Brown, Gray and White color available

**ORDER NO: 327**



## SCULPTURING WAX 101 -101/1

This Green SCULPTURING WAX is designed for summer usage with a melting Point of 63 ° C. It has a high quality carving properties despite its rigidity.

**ORDER NO : DISC FORM: 101 MOLAR FORM: 101/1**



## SCULPTURING WAX 102 -102/1

This Dark Blue SCULPTURING WAX has a smooth surface with a melting point at 63° C. It is excellent for sculpturing despite its hardness. Suitable for summer usage

**ORDER NO : DISC FORM: 102 MOLAR FORM: 102/1**



## SCULPTURING WAX 103 -103/1

This Green SCULPTURING WAX is designed for winter usage with a melting point of 63°C. It has minimal shrinkage and clean, sharp carving ability.

**ORDER NO : DISC FORM: 103 MOLAR FORM: 103/1**



## SCULPTURING WAX 201-201/1

This Turquoise SCULPTURING WAX has a high internal stability despite its hardness. Even smallest details can be constructed. It is very easy to carve and has a melting point of 67°C

**ORDER NO : DISC FORM: 201 MOLAR FORM: 201/1**



## CERVICAL WAX 202 - 202/1

This Red MARGIN (CERVICAL) is designed for summer usage with a melting point of 63°C. It can be applied in cervical parts. It is a smooth - flowing wax that adapts perfectly.

**ORDER NO : DISC FORM: 202 MOLAR FORM: 202/1**



## DIPPING WAX 204 - 204/1

This White SCULPTURING WAX has a very smooth surface which provides greatly precise results during carving. It has a melting point of 69°C.

**ORDER NO : DISC FORM: 204 MOLAR FORM: 204/1**



## SCULPTURING WAX 205 -205/1

This Turquoise SCULPTURING WAX is designed for technician that are looking for a low melting point sculpturing wax with high elasticity, no contraction and easy shaping features. It has a melting point of 61°C.

**ORDER NO : DISC FORM: 205 MOLAR FORM: 205/1**



## CERVICAL WAX 206 -206/1

This Red MARGIN (CERVICAL) WAX is designed for winter usage with a melting point of 63°C. It can be applied in cervical parts. It has high elasticity with no shrinkage.

**ORDER NO : DISC FORM: 206 MOLAR FORM: 206/1**



## SCULPTURING WAX 207 -207/1

The Dark Blue SCULPTURING WAX provides precise results when carved. Melting point 63°C. Keep shrinkage during solidification to a minimum and no residue after burn-out.

**ORDER NO : DISC FORM: 207 MOLAR FORM: 207/1**



## SCULPTURING WAX 208 -208/1

This Orange SCULPTURING WAX is designed for winter usage with a melting point of 63°C. It has minimal shrinkage and clean, sharp carving ability.

**ORDER NO : DISC FORM: 208 MOLAR FORM: 208/1**



## MILLING WAX 220-220/1

This Dark Blue MILLING WAX is a tough wax. It has easy carving property with melting point at 85°C.

**ORDER NO : DISC FORM: 220 MOLAR FORM: 220/1**



## UNDERCUT WAX 255-255/1

This White UNDERCUT WAX has a high internal stability despite its hardness. Even smallest details can be constructed. It is very easy to carve.

**ORDER NO : DISC FORM: 255 MOLAR FORM: 255/1**



## UNDERCUT WAX 303-303/1

This Yellow DIPPING WAX provides very precise result with the perfect amount of elasticity. It has a melting point of 63°C.

**ORDER NO : DISC FORM: 303 MOLAR FORM: 303/1**



## WHITE WAX 305-305/1

This WHITE WAX is a very soft wax. It is very efficient in making model. It has a melting point of 62°C.

**ORDER NO : DISC FORM: 305 MOLAR FORM: 305/1**



## SCULPTURING WAX 774

Dark blue SCULPTURING WAX 774 has easy flow properties with low contraction. It has a melting point of 68°C, excellent for modelling.

**ORDER NO : 774**



## FOUR COLOUR TOGETHER WAX

The FOUR COLOUR TOGETHER WAX has easy flow properties with low contraction. Provides easy modelling and in a very economic way. Colors are red, blue, yellow and green.

**ORDER NO : 800**



## BLOCK-OUT WAX (FOR Cr-Co APPLICATIONS)

The BLOCK-OUT WAX provides easy clean carving and the low melting point enables a good connection between waxes. It is suitable for Cr-Co applications too.

**ORDER NO: 874**

**COLOR AVAILABLE: BLUE, GREEN, ORANGE, RED**





# LIGHT CURING MATERIALS



## LIGHT CURING BASE PLATE(50 PCS)

POLYWAX LIGHT CURE BAS PLATE is utilized to manufacture customized trays for detachable and fixed implant-restorations. The light cure base plate also form a steady base for wax try-ins and bite registration. They can also be used to take biteplates.

**ORDER : 2300**



## POLYCURE L.C PATTERN RESIN

POLYCURE LC PATTERN RESIN is a viscous light-cured, methacrylatebased utility resin. Used for making patterns for fabricating copings, post and core build-ups and implant attachments. Sets quickly with minimal shrinkage and leaves no residue after burnout.( 2 SYRINGES\*3 ML IN A BOX)

**ORDER NO: 2320**

**COLOR AVAILABLE : BLUE,RED**



## POLYCURE L.C BLOCK OUT RESIN

POLYCURE LC BLOCK OUT RESIN is a viscous light-cured, methacrylatebased utility resin and delivered via syringe. It is used for creating reservoir space in bleaching trays, for lab procedures requiring spacing or undercut block out.( 2 SYRINGES\*3 ML IN A BOX)

**ORDER NO: 2310**

**COLOR AVAILABLE : BLUE,RED**



## POLYCURE 3D RESIN FOR MODEL

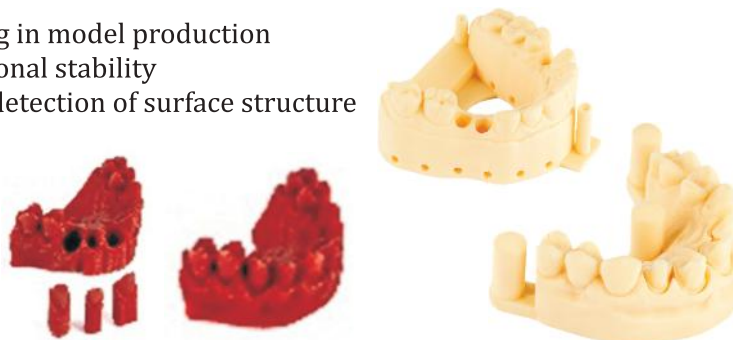
POLYCURE Model Resin is formulated for smooth, high quality and fast printing of tooth models. It has a low shrinkage rate and provides an ideal production for scanning measures in prosthetic dental treatment where high precision is required. It is produced for model printing on 3D printers between 385 and 405 nm wavelength.

- Detailed, precise and fast printing in model production
- Low shrinkage and high dimensional stability
- Opaque color setting for optical detection of surface structure

**ORDER NO : 2330**

**COLORS : Various**

**PACKAGING : 500 gr, 1000 gr**



## POLYCURE 3D RESIN FOR TEMPORARY CROWN AND BRIDGE

POLYCURE Temporary resin is specially formulated for use in temporary crowns and bridges in the patient's mouth. POLYCURE Temporary Resin, which has a biocompatible feature, does not leave taste and odor, has high breakage and abrasion resistance. It can be easily polished. It is produced for temporary crown and bridge printing on 3D printers between 385 and 405 nm wavelength.

- Exceptional fracture and bending resistance
- Bright translucent colors with natural dental aesthetics
- Easy surface treatment and polishing feature Resistant to oral conditions, odorless and tasteless formulation

ORDER NO : 2340  
COLORS : A1, A2, A3  
PACKAGING : 500 gr, 1000 gr



## POLYCURE 3D RESIN FOR SURGICAL GUIDE

POLYCURE Surgical Guide Resin is specially formulated for the manufacture of parts used as surgical guides in implant procedures. Biocompatible POLYCURE Surgical Guide Resin can be used safely with its transparent and odorless properties. It is suitable for sterilization by autoclave. It is produced for surgical guide printing on 3D printers between 385 and 405 nm wavelength.

- Biocompatible and can be used safely in the mouth
- Suitable for sterilization by autoclave, odorless and tasteless formulation resistant to intraoral conditions

ORDER NO : 2370  
COLORS : Transparent  
PACKAGING : 500 gr, 1000 gr



## POLYCURE 3D RESIN FOR DENTURE SPLINT

POLYCURE Splint Resin is specially formulated for the manufacture of splints used to fix, protect and support displaced or replanted teeth. It provides process safety with its high mechanical bending strength without breaking. It is easily polishable and colorless. It is resistant to oral conditions. It is produced for surgical guide printing on 3D printers between 385 and 405 nm wavelength.

- Biocompatible and can be used safely in the mouth Suitable for sterilization by autoclave
- Odorless and tasteless formulation resistant to oral conditions

**ORDER NO** : 2380

**COLORS** : Transparent

**PACKAGING** : 500 gr, 1000 gr



## POLYCURE 3D RESIN FOR DIRECT CASTING

POLYCURE Casting Resin has been specially developed for high precision casting processes. Having excellent dimensional stability after printing, POLYCURE Casting Resin burns without leaving any residue in the mold. Suitable for direct metal casting. It is produced for casting printing on 3D printers between 385 and 405 nm wavelength.

- Precise and smooth results for highly precise and complex models
- Excellent dimensional stability after printing and casting
- Evaporates at moderate combustion temperatures without reacting with the investment. Specially formulated for direct casting, provides 100% ashless casting

**ORDER NO** : 2390

**COLORS** : Transparent , Red

**PACKAGING** : 500 gr, 1000 gr





# CASTING MATERIALS



## CASTING MATERIALS

### NEW PONTICS IN BOX

The Green NEW PONTIC BOX is used for making bridges in the dental lab. The scraping features, melting point and hardness are adjusted to the modeling waxes to permit an exact and simple connection between the crown pattern and the pontic.

#### Types Available:

ANT-1; ANT-2; ANT-3  
 POST-1; POST-2; POST-3,  
 POST-4 RIGHT; POST-4 LEFT  
 POST-5

**ORDER NO:** 1000  
**UNIT WEIGHT :** 0,100 KG



### NEW PONTIC SET

The Green NEW PONTIC SET is used for making bridges in the dental lab. The scraping features, melting point and hardness are adjusted to the modeling waxes to permit an exact and simple connection between the crown pattern and the pontic. 18 separated parts in one set. Approx. 330 blocs in total

**ORDER NO:** 1010 **UNIT WEIGHT :** 0,400 KG



### CASTING WAX SHEETS-SMOOTH

The POLYWAX SMOOTH CASTING WAX is an easy to adapt pliable casting wax with no tension. Applied well to the model. 10 sheets in one box.

**THICKNESS AVAILABLE:** 0,3 MM, 0,4 MM, 0,5 MM, 0,6 MM, 0,7 MM

**ORDER NO:** 400 BLUE  
 401 GREEN



### TEXTURED WAX SHEETS

The TEXTURED WAX is an easy to adapt pliable, structured casting wax with no tension. Applied well to the model with an easily polishable texture. 10 sheets in a box.

**THICKNESS AVAILABLE:** 0,3 MM, 0,4 MM, 0,5 MM, 0,6 MM, 0,7 MM

**ORDER NO:** 500 : COARSE GRAIN  
 505 : VEINED GRAIN  
 510 : FINE GRAIN

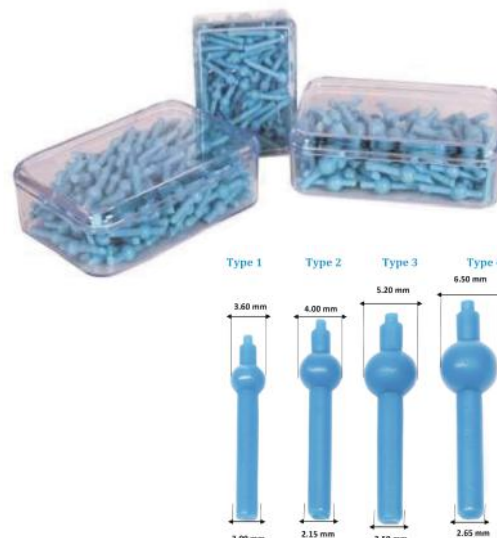


## SPRUE WAX WITH RESERVOIR

The POLYWAX SPRUE WAX with reservoir is ideal for casting. It prevents localized shrinkage porosity. Can be used to connect the wax model with the casting mold's opening.

**ORDER NO:** 4000

**TYPE AVAILABLE:** TYPE 1, TYPE2, TYPE3, TYPE 4



## SPRUE WAX WITH RUNNING BAR

The POLYWAX SPRUE WAX with running bar is ideal for casting. It prevents localized shrinkage porosity. Can be used to connect the wax model with the casting mold's opening.

**ORDER NO:** 4010



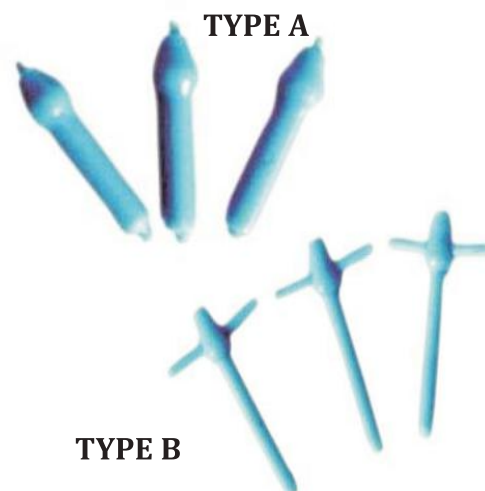
## CASTING SPRUE WAX

The POLYWAX CASTING SPRUE WAX can be used in the process of patterns. In lower temperature, without compromising the quality of the mold the wax melts for a clean burnout and flexible yet firm enough for spruing and mounting pattern.

**THICKNESS AVAILABLE:**

5.0 MM, 6.0 MM, 7.0MM, 8.0MM, 9.0 MM

**ORDER NO:** 5000: TYPE A  
5001: TYPE B



## PERIPHERY WAX

The PERIPHERY WAX is perfect to be used for protecting the soft tissue from the periphery of impression tray, to extend or post dam impression trays. The wax enables a complete and accurate impression of the mouth to be taken

**ORDER NO:** 550

**UNIT WEIGHT:** 0,100 KG



## BOXING WAX - BAR TYPE

The POLYWAX BOXING WAX is used to 'box-in' impressions and contain the plaster when pouring a model. It is an easily applied impression material. Length: 15 cm Diameter: 6 mm.

**ORDER NO:** 551

**UNIT WEIGHT:** 0,100 KG



## BOXING WAX - STRIP TYPE

The POLYWAX STRIP BOXING WAX is used to 'box-in' impressions and contain the plaster when pouring a model. It is easily applied impression materials.

Flexible soft strips.

Length: 24 cm Thickness: 1.0 – 1.6mm

**ORDER NO:** 551/1

**UNIT WEIGHT:** 0,450 KG  
2,250 KG



## STICKY WAXES

The POLYWAX STICKY WAX is used to hold or weld materials or pieces together and have a high adhesive capacity, smear free. It can also be used for temporary gluing of metal, acrylic or stone particles.



### STICKY WAX(DISK SHAPE)

**ORDER NO** : 772  
**UNIT WEIGHT** : 0,100 KG

### STICKY WAX(10 STICKS/ BOX)

**ORDER NO** : 772/2  
**UNIT WEIGHT** : 0,150 KG

### STICKY WAX(24 STICKS/ BOX)

**ORDER NO** : 772/1  
**UNIT WEIGHT** : 0,200 KG

## CARVING WAX

The POLYWAX CARVING WAX was developed with the objective of producing a high quality carving wax suitable for all applications. You get a high inner stability that's not fragile. Designed to provide very good carving features.



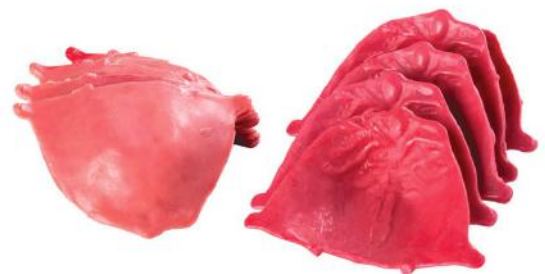
CONTENTS	ORDER NO
3 PCS / BOX	647
10 PCS / BOX	648
40 PCS / BOX	649



## PALATAL WAX

Save time wax with these preformed palates created with the recommended thickness. It is easy to adapt at acetal application. 10 pieces in one box.

**ORDER NO:** 2350  
**UNIT WEIGHT:** 0,100 KG



## IMPRESSION COUMPOUND (TRACER & PASTE)

They can be used for taking full and partial impressions, and making preliminary impression trays. It has an excellent compact ability with most hydrocolloid or silicone material.

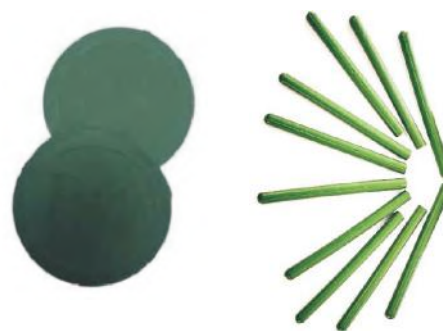
**UNIT WEIGHT:** 0,100 KG

**COLORAVAILABLE :** GREEN,BROWN

**ORDER NO:**

5113: TRACER(10PCS)

5114: PASTE (4PCS)



## WAX WIRE (ROLL TYPE)

The POLYWAX WAX WIRE is the best wax money can buy. We responded to the wish fo many technicians who were looking for a harder and more economic wax wire and so developed Polywax Roll.

**AVAILABLE THICKNESS :** 2,0 MM, 2,50 MM, 3.0 MM, 4.0 MM,5.0 MM,

**ORDER NO:** : 600 (0,400 KG) - 601 (0,250 KG)

**COLORAVAILABLE:** : BLUE,GREEN



## WAX WIRE (STICK TYPE)

The POLYWAX HARD ROUND WAX WIRE is a pack of hard wax wires in round shape. Wax wires are designed to be twisted or bent to form desired patterns. Each wire is flexible without loosing strength. It can be used by jewelers, in designing wax models, or in wax casting process and also in wax work for artistic detailing.



## WAX WIRE ROUND IN BOX

**ORDER NO:** 709

**THICKNESS AVAILABLE :** 0.6 MM,0.8 MM, 1.0 MM

## STICK WAX WIRE IN CASE

**ORDER NO:** 710

**THICKNESS AVAILABLE :** 2.0 MM,2.50 MM,3.0 MM, 3.50 MM, 4.0 MM,4.50 MM,5.0 MM

## POLYWAX HARD WAX WIRE

**ORDER NO:** 711

**THICKNESS AVAILABLE :**

0.6 MM; 0.8 MM; 1.0 MM; 2.0 MM; 2.50 MM; 3.0 MM;  
3.50 MM; 4.0 MM; 4.50 MM; 5.0 MM



## CLASP WAXES

The CLASP WAX IN STICK produced by BILKIM is ideal and accurate, tough and coefficient of thermal expansion of small and good performance. There are many sizes and kinds for your choice

### WAX PROFILE IN BAR (HALF ROUND)

ORDER NO: 705



THICKNESS 6.60 MM



### WAX PROFILE IN BAR (LARGE HALF ROUND)

ORDER NO: 705/1



THICKNESS 2.50 MM



### STICK WAX CLASPS (THICK TYPE, HALF ROUND)

ORDER NO: 706



THICKNESS 1.30 MM



### STICK WAX CLASPS (MEDIUM TYPE, HALF ROUND)

ORDER NO: 707



THICKNESS 1.20 MM



### STICK WAX CLASPS (THIN TYPE, HALF ROUND)

ORDER NO: 708



THICKNESS 1.0 MM



### STICK WAX CLASPS (THIN TYPE, ROUND)

DIA 1,50 MM)

ORDER NO: 708/1



## CLASPS WAX

The CLASP WAX produced by BILKIM is ideal, accurate, tough and coefficient of thermal expansion for small and good performance. There are many sizes and kinds to choose from. There are 10 sheets in one box.

### RING CLASPS WAX

ORDER NO : 700



### PREMOLAR BONYHARD CLASPS WAX

ORDER NO : 701



### PREMOLAR CLASPS WAX

ORDER NO : 702



### MOLAR CLASPS WAX

ORDER NO : 703



### MOLAR BONYHARD CLASPS WAX

ORDER NO : 704

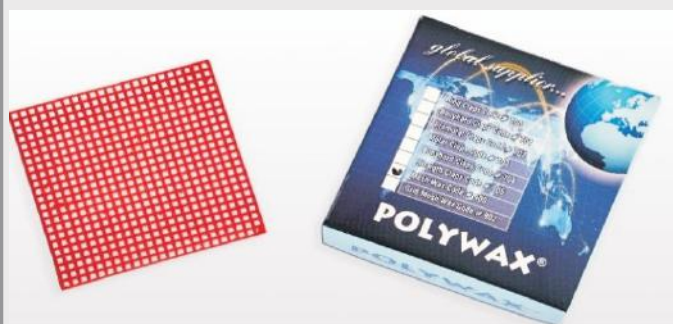


## MESH WAX

The POLYWAX MESH WAX is designed to provide retention in partial denture wax-ups. It is tension free and very easily adaptable. 15 sheets / box

### MESH WAX (6.5 cm x 7.5 cm)

ORDER NO: 900



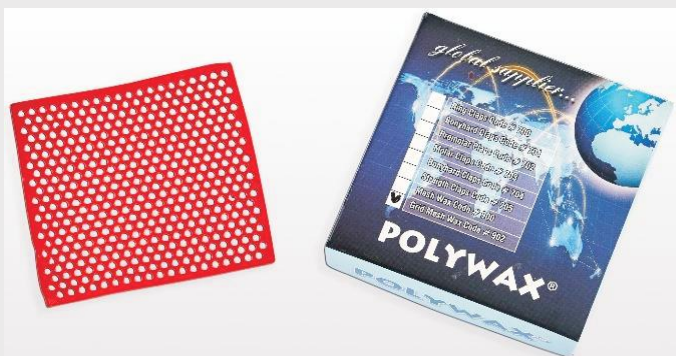
### LARGE MESH WAX(15\*7.5 CM)

ORDER NO: 901



### GRID MESH WAX(6.5 CM\*7.5 CM)

ORDER NO : 902



## RETENTION MESH WAXES

The POLYWAX RETENTION MESH WAXES are designed to provide retention in partial denture wax-ups. It is tension free and very easily adaptable. 20 strips in one box.

### RETENTION MESH WAX (SMALL GRID)

ORDER NO: 903



### RETENTION MESH WAX (THICK SMALL GRID)

ORDER NO: 903/1



### RETENTION MESH WAX (OVAL GRID)

ORDER NO: 904



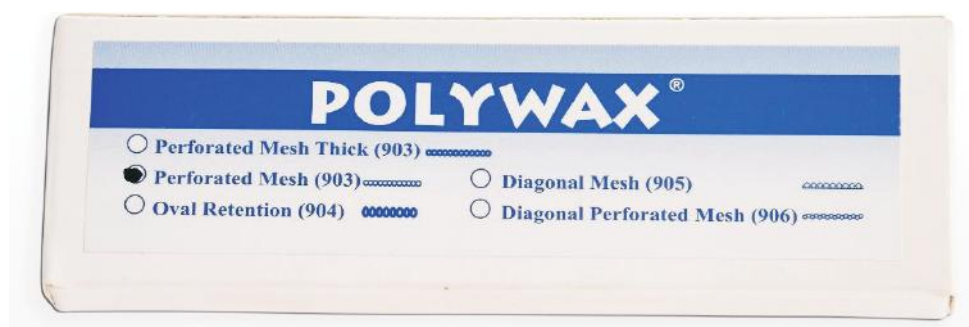
### DIAGONAL MESH WAX

ORDER NO: 905



### DIAGONAL PERFORATED MESH WAX

ORDER NO: 906





# CAD - CAM BLANKS



## WAX BLANK FOR CAD-CAM APPLICATIONS

The WAX BLANK are used in the fabrication of wax modeling, in the lost wax process for casting, making denture restorations and for frameworks for crown and bridge models. These are compatible with all open system machines.



### WAX BLANK FOR CAD-CAM APPLICATION - 98 MM

**ORDER NO:** 2111

**THICKNESS AVAILABLE :** 10 MM, 12 MM, 14 MM, 16 MM, 18 MM, 20 MM, 22 MM, 25 MM,

**COLORAVAILABLE :** WHITE, BLUE, GRAY, GREEN, BROWN A1,A2,A3, A3,5, A4, B1, B2, B3 , B4, C1, C2, C3, C4, D1, D2, D3, D4,



### WAX BLANK Dia.95 mm (Z/Z Comp.)

**ORDER NO:** 2111/1

**THICKNESS AVAILABLE :** 10 MM, 12 MM, 14 MM, 16 MM, 18 MM, 20 MM, 22 MM, 25 MM,

**COLORAVAILABLE :** WHITE, BLUE, GRAY, GREEN, BROWN A1,A2,A3, A3,5, A4, B1, B2, B3 , B4, C1, C2, C3, C4, D1, D2, D3, D4,



### WAX BLANK 89\*71 mm (A/G Comp.)

**ORDER NO:** 2111/2

**THICKNESS AVAILABLE :** 12 MM, 13 MM, 14 MM, 16 MM, 18MM, 20 MM,

**COLORAVAILABLE :** WHITE, BLUE, GRAY, GREEN, BROWN A1,A2,A3, A3,5, A4, B1, B2, B3 , B4, C1, C2, C3, C4, D1, D2, D3, D4,



### WAX BLANK FOR MANUAL MACHINES

**ORDER NO:** 2113

**THICKNESS AVAILABLE :** 16 MM,18 MM, 20 MM

**COLORAVAILABLE :** WHITE, BLUE, GRAY, GREEN, BROWN A1,A2,A3, A3,5, A4, B1, B2, B3 , B4, C1, C2, C3, C4, D1, D2, D3, D4



### WAX BLANK 76 mm x 38 mm (DWX-4 Machine Comp.)

**ORDER NO:** 2115

**THICKNESS AVAILABLE :** 16 MM,18 MM, 20 MM

**COLORAVAILABLE :** WHITE, BLUE, GRAY, GREEN, BROWN A1,A2,A3, A3,5, A4, B1, B2, B3 , B4, C1, C2, C3, C4, D1, D2, D3, D4



## PMMA FOR CAD-CAM APPLICATIONS

The PMMA BLANK is developed to be used in milling machines for making temporary restorations, for gingiva formation after placing dental implants and for accurate determination of the occlusal contacts before placing zirconium prosthetic structures.

### PMMA BLANK FOR CAD CAM APPLICATIONS – 98 MM

**ORDER NO:** 2112

**THICKNESS AVAILABLE :** 10 MM, 12 MM, 14 MM, 16 MM, 18 MM,  
20 MM, 22 MM, 25 MM

**COLORAVAILABLE :** A1, A2, A3, A3.5, A4, B1, B2, B3, B4, C1, C2, C3,  
C4, D1, D2, D3, D4,  
PURE WHITE , PINK, CLEAR, ORANGE, GREEN,  
BLUE,RED,GRAY,DARK GREY, PURPLE,



### PMMA BLANK 89\*71 mm (A/G COMP.)

**ORDER NO:** 2112/2

**THICKNESS AVAILABLE :** 12 MM, 13 MM, 14MM  
16 MM, 18 MM, 20 MM

**COLORAVAILABLE :** A1, A2, A3, A3.5, A4,  
B1,B2, B3, B4,  
C1, C2, C3, C4,  
D1, D2, D3, D4,  
PURE , WHITE , PINK, CLEAR,  
ORANGE, GREEN, BLUE,RED,  
GRAY,DARK GREY, PURPLE



### PMMA BLANK Dia. 95 mm ( Z/Z COMP.)

**ORDER NO:** 2112/1

**THICKNESS AVAILABLE :** 10 MM,12 MM, 14 MM, 16 MM,  
18 MM,20MM, 22 MM AND 25 MM

**COLORAVAILABLE :** A1, A2, A3, A3.5, A4, B1,B2, B3, B4,  
C1, C2, C3, C4, D1, D2, D3, D4,  
PURE , WHITE , PINK, CLEAR,  
ORANGE, GREEN, BLUE,RED,  
GRAY,DARK GREY, PURPLE





### PMMA BLANK FOR MANUAL MACHINES

ORDER NO: 2114

THICKNESS AVAILABLE : 16 MM,18 MM, 20 MM

COLORAVAILABLE : A1, A2, A3, A3.5, A4,  
B1, B2, B3, B4, C1,  
C2, C3, C4,  
D1, D2, D3, D4,  
PURE WHITE , PINK, CLEAR, ORANGE, GREEN,  
BLUE,RED,GRAY,DARK GREY, PURPLE

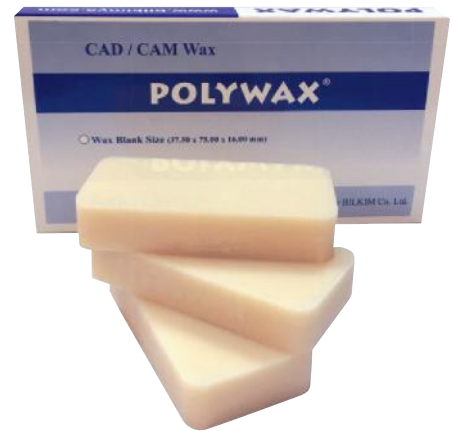


### PMMA BLANK 76 mm x 38 mm (DWX-4 Machine Comp.)

ORDER NO: 2117 : 76CM\*38CM\*16CM

ORDER NO: 2118 : 76CM\*38CM\*20CM

COLORAVAILABLE : A1, A2, A3, A3.5, A4,  
B1, B2, B3, B4,  
C1, C2, C3, C4,  
D1, D2, D3, D4,  
WHITE, PINK, TRANSPARENT



### PRISM PMMA BLANKS

ORDER NO: 7224 : 14.0 MM\*15.0 MM\*40.0 MM

ORDER NO: 7225 : 19.0 MM\*15.0 MM\*40.0 MM

COLORAVAILABLE : A1,A2,A3, A3.5, A4,  
B1, B2, B3 , B4,  
C1, C2, C3, C4,  
D1, D2, D3, D4,  
PURE WHITE , PINK, CLEAR



### PMMA ACETAL BLANK

The Bilkim Acetal PMMA is suitable for the fabrication of model making and die and for denture Processing. It is a white millable and flexible acetal material that offers dental technicians and dentists a metal-free option for removable applications. It has Low water absorption and high density.

**ORDER NO:** 2119

**THICKNESS AVAILABLE :** 10 MM, 12 MM, 14 MM, 16 MM,  
18 MM, 20 MM, 22 MM, 25 MM

**COLOR AVAILABLE :** WHITE



### MULTILAYER PMMA BLANK

With a high flexural strength and seamless color transition of three colors that are blended perfectly together, the multilayer blanks provide a completely natural look for dental restoration.

**ORDER NO:** OPEN SYSTEM DIA.98 MM:2112/M  
Z/Z COMP. DIA. 95 MM: 2112/1-M  
A/G COMP. DIA.89\*71 MM: 2112/2-M

**THICKNESS AVAILABLE :** 10 MM, 12 MM, 14 MM, 16 MM,  
18 MM, 20 MM, 22 MM, 25 MM

**COLOR AVAILABLE :** A1,A2,A3,A3.5, A4





# STUDY MODELS



## STUDY MODELS

### BLK 3405- JAW MODEL MADE OF HARD MATERIAL (SCREWED)

The perfect models to explore learning basic dentistry.  
The jaw model made of hard material and it has 32 screwed teeth.

**ORDER :** 3405

**COLOR AVAILABLE :** TRANSPARENT, ORANGE, PINK,  
GREEN, BLUE



### STANDARD MELAMINE 32 TEETH FIT TO BLK 3405

The set of 32 model teeth made of melamine,  
with screws, to fit BLK 3405 STUDY MODEL

**ORDER NO:** 3408



### BLK 3405 /1- JAW MODEL MADE OF HARD MATERIAL (SCREWED, DIFFERENT TEETH SHADE)

The perfect models to explore learning basic dentistry.  
The jaw model made of hard material and it has 32 screwed teeth.

**ORDER NO:** 3405/1

**COLOR AVAILABLE :** A1,A2,A3

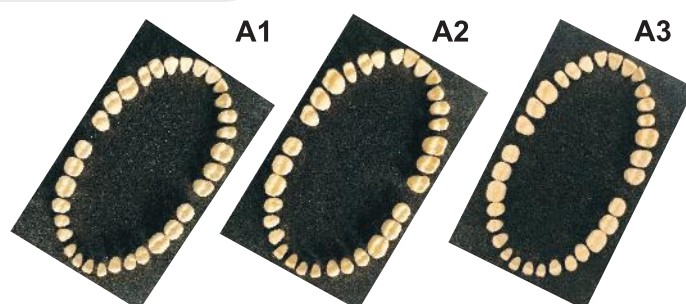


### STANDARD MELAMINE 32 TEETH FIT TO BLK 3405 & 3405/1

The set of 32 model teeth made of melamine, with  
screws, to fit BLK 3405 and 3405/1 STUDY MODEL.

**ORDER NO:** 3408/1

**COLOR AVAILABLE :** A1,A2,A3



### **BLK 3418-32 TEETH STUDY MODEL**

The 32 TEETH JAW MODEL has removable and soft gingiva. Adaptable to phantom head. Teeth hardness similar to natural human teeth.

**ORDER NO: 3418**



### **STANDARD MELAMINE 32 TEETH, TO FIT BLK 3418**

The set of 32 model teeth made of melamine, with screws, to fit BLK 3418 32 TEETH JAW MODEL

**ORDER NO: 3417**



### **BLK 3425-28 TEETH STUDY MODEL**

The 28 TEETH JAW MODEL has removable and soft gingiva. Adaptable to phantom head. Teeth hardness similar to natural human teeth.

**ORDER NO: 3425**



### **STANDARD MELAMINE 28 TEETH, TO FIT BLK 3425**

The set of 28 model teeth made of melamine, with screws, to fit BLK 3425 28 TEETH JAW MODEL

**ORDER NO: 3424**



### **BLK 3410-FLEXIBLE JAW MODEL 32 TEETH**

The FLEXIBLE JAW MODEL offers the perfect models to explore learning basic dentistry. The jaw model made of soft material and it has 32 unscrewed teeth.

**ORDER NO:** 3410

**COLOR AVAILABLE :** ORANGE, LIGHT PURPLE ,TRANSPARENT



### **BLK 3422-JAW MODEL WITH TOP AND BOTTOM COVERS**

The Study Model offers the perfect models to explore learning basic dentistry. This jaw model has up and bottom covers. The jaw model made of hard material and it has 32 screwed teeth."

**ORDER NO:** 3422



### **BLK 3414-JAW MODEL WITH TEETH&IMPLANT**

The BLK 3414 JAW MODEL is perfect for implantology and full denture exercises. The model has upper and lower jaws with teeth and implant.

**ORDER NO:** 3414



### **BLK 3413-JAW MODEL WITHOUT TEETH, WITH IMPLANT**

The BLK 3413 JAW MODEL is perfect for implantology and full denture exercises. The model has upper and lower jaws without teeth and with implant. Available in Pink and transparent

**ORDER NO:** 3413



### **BLK 3415-JAW MODEL WITHOUT TEETH OR IMPLANT**

The BLK 3415 JAW MODEL is perfect for implantology and full denture exercises. The model has upper and lower jaws without teeth and implant. Available in Pink and transparent

**ORDER NO:** 3415



## ANATOMICAL - WAX TEETH MODEL

The Anatomical Teeth Wax Model has 32 units anatomical teeth made of easy to carve wax type. It is for educational use only

**ORDER NO:** 7112

**COLOR AVAILABLE :** IVORY, BLUE



## CARVING BLOCKS ( 4 PCS)

The POLYWAX CARVING WAX BLOCKS are easy to carve like soap and students can shape the wax to form teeth roots.

One set includes 4 pieces with different sizes.

Code 1 Size: 11.80 \* 3.40 \* 3.70 mm

Code 2 Size: 10.30 \* 3.10 \* 2.80 mm

Code 3 Size: 9.30 \* 5.10 \* 7.10 mm

Code 4 size : 10.50 \* 1.40 \* 3.40 mm

**ORDER NO:** 8963



## SILICONE MOLD FOR PLASTER MODEL

Made of high-quality silicone rubber with precision, and very durable. The mold material is soft and tough which provide clear teeth formation. 2pcs Dental Plaster Model Mold (upper and lower) / boxes

**ORDER NO:** 2700 With teeth mark  
2700/1 Without teeth mark

**COLOR AVAILABLE :** GREEN, WHITE, BLUE, PURPLE, RED

**WITH TEETH MARK**



**WITHOUT TEETH MARK**





# ACRYLICS



## DENTURE REPAIR MATERIAL/ COLD CURE ACRYLIC RESIN

POLYACRYL COLD CURE ACRYLIC RESIN is a polymethylmethacrylate based denture repair material used in repair of total and partial denture. It is a selfcuring material. Does not make porosity and has an excellent color stability.

**COLOR AVAILABLE:** PINK COLOR WITH OR WITHOUT VEIN

### Available Packaging

45 mL Liquid + 80 gr powder  
250 mL Liquid + 500 gr powder  
500 mL Liquid + 1000 gr powder  
45 mL Liquid  
250 mL Liquid  
500 mL Liquid  
80 gr Powder  
500 gr Powder  
1000 gr Powder

### ORDER NO

6353/S  
6353/M  
6353/L  
6353/1  
6353/2  
6353/3  
6353/11  
6353/21  
6353/31



## DENTURE BASE MATERIAL/ HEAT CURE ACRYLIC RESIN

POLYACRYL HEAT CURE ACRYLIC RESIN is a polymethylmethacrylate based denture base material used in total and partial denture applications. It polymerizes with heat and has the appropriate particle size. Does not make porosity and has an excellent color stability.

**COLOR AVAILABLE:** PINK COLOR WITH OR WITHOUT VEIN

### Available Packaging

250 mL Liquid + 500 gr powder  
500 mL Liquid + 1000 gr powder  
250 mL Liquid  
500 mL Liquid  
500 gr Powder  
1000 gr Powder

### ORDER NO

6354/M  
6354/L  
6354/2  
6354/3  
6354/21  
6354/31





# MISCELLANEOUS



## MODEL BOX FOR ORTHO USAGE (RETAINER)

Our orthoboxes are easy to open and carry. Sophisticated design for the patient. Many color choices sizes available.

**COLOR AVAILABLE:** VARIOUS COLORS



## MODEL BOX FOR PROSTHETIC ~ 7,0 cm Deep

Specially designed for Prosthetic usage. Many color choices sizes available.

**ORDER NO:** 6001

**COLOR AVAILABLE:** VARIOUS COLORS



## CHEEK RETRACTOR

Our Cheek Retractors are tough and autoclavable, can be warmed to 100°C (212 °F), long handle gives ease of applicator, very flexible not to hurt patient is cheek, smooth surface makes patients exceptionally comfortable.

**ORDER NO:** 6100

**COLOR AVAILABLE:** VARIOUS COLORS



## PLASTIC ARTICULATOR

The POLYWAX PLASTIC ARTICULATOR is ideal for taking exact impression and very easy to use.

**ORDER NO:** 6002

**COLOR AVAILABLE:** VARIOUS COLORS



## FULLY ARCH PLASTIC ARTICULATOR

The fully arch articulator is very easy to use.  
It includes snapper, locks and mouthing plates.

**ORDER :** 6003



## UNIVERSAL BALL ATTACHMENT (MALE&FEMALE PARTS / SET)

These attachments may be used in almost any attachment case.  
They are ideal for situations with limited space and may be put nearly anywhere, including the buccal and lingual surfaces.

**ORDER NO:** 2565

**COLOR AVAILABLE :** Patrice: BLUE  
Matrice: YELLOW,RED

**DIAMETER AVAILABLE :** 1.7 ; 2.20 MM

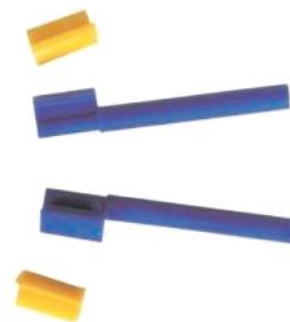


## SOFT BAR ATTACHMENT (MALE&FEMALE PARTS / SET)

The soft bar attachment is a stiff extra coronal slide attachment that can be used in virtually any attachment case. The female is composed of an acrylic substance that is very elastic and accurate. The male is created of burnt-out plastic and may thus be cast in almost any alloy.

**ORDER NO:** 2566

**COLOR AVAILABLE :** Patrice: BLUE  
Matrice: YELLOW,RED



## OTCUB ATTACHMENT (ONE BAR + 2 CUPS / SET)

The Cup System Attachment is designed to be used on natural teeth, roots, and implants in conjunction with prostheses, frames, and connecting bars. These buttons can be used as retentive stabilizers.

**ORDER NO:** 2567 : 1,70 mm (RED)  
2568 : 2,20 mm (GREEN)  
2567/1 : 1,70 mm METAL HOUSING  
2568/1 : 2,20 mm METAL HOUSING



### ALUMINIUM MESH, GOLD PLATED 0,30 MM

The ALUMINIUM MESH WITH GOLD PLATED is used as reinforcement mesh for acrylic partial full denture palatal retention. Flexible and easy to shape.

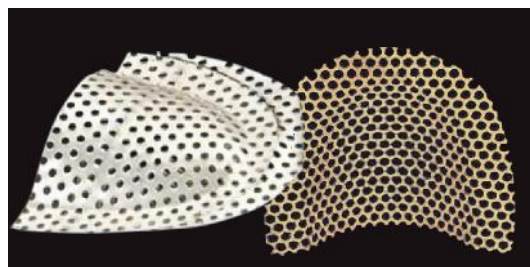
**ORDER NO:** 1930



### STAINLESS STEEL MESH 0,45 MM

The STAINLESS STEEL MESH is used as reinforcement mesh for acrylic partial full denture palatal retention. Flexible and easy to shape.

**ORDER NO:** 1940 Silver Color  
1945 Gold Plated



### STAINLESS STEEL MESH, GOLD PLATED 0,60 MM

The STAINLESS MESH WITH GOLD PLATED is used as reinforcement mesh for acrylic partial full denture palatal retention. Flexible and easy to shape. Thickness: 0.60mm

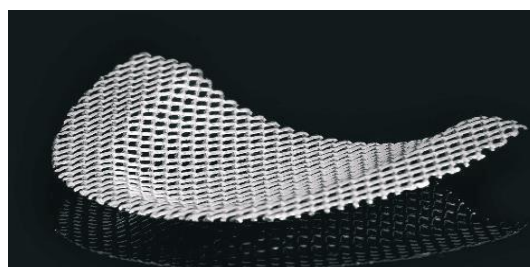
**ORDER NO:** 1950



### ALUMINIUM MESH, 0.60 MM

The ALUMINIUM STEEL MESH is used as reinforcement mesh for acrylic partial full denture palatal retention. Flexible and easy to shape.

**ORDER NO:** 1900



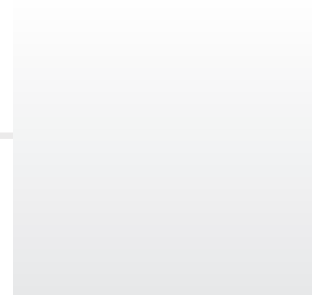
## POLYWAX PLASTIC GASKET SHEET

The POLYWAX PLASTIC GASKETS can be used for for mouthguards, nightguards and model duplication. It can be square or round shape and various thickness are available

### POLYWAX PLASTIC GASKET SHEET SQUARE (SOFT)

Specially designed for Proshtetic usage. Many color choices sizes available.

**ORDER NO** : 2332  
**COLOR AVAILABLE** : TRANSPARENT  
**THICKNESS AVAILABLE** : 1.0 ; 1.5; 2.0 MM (15 PCS /BOX)  
2.5 ; 3.0 MM (10 PCS /BOX)



### POLYWAX PLASTIC GASKET SHEET SQUARE ( HARD)

Specially designed for Prosthetic usage. Many color choices sizes available.

**ORDER NO** : 2333  
**COLOR AVAILABLE** : TRANSPARENT  
**THICKNESS AVAILABLE** : 1.0 ; 1.5; 2.0 MM (15 PCS /BOX)  
2.5 ; 3.0 MM (10 PCS /BOX)

### POLYWAX PLASTIC GASKET SHEET ROUND (SOFT) Ø 12 CM

**ORDER NO** : 2332/1  
**COLOR AVAILABLE** : WHITE, GREEN, BLUE, YELLOW, RED, TRANSPARENT  
**THICKNESS AVAILABLE** : 1.0 ; 1.5; 2.0 MM (15 PCS /BOX)  
2.5 ; 3.0 MM (10 PCS /BOX)



### POLYWAX PLASTIC GASKET SHEET ROUND ( HARD) Ø 12 CM

**ORDER NO** : 2333/1  
**COLOR AVAILABLE** : WHITE, GREEN, BLUE, YELLOW, RED, TRANSPARENT  
**THICKNESS AVAILABLE** : 1.0 ; 1.5; 2.0 MM (15 PCS /BOX)  
2.5 ; 3.0 MM (10 PCS /BOX)

## POLYCONE, SILICONE DUPLICATING MATERIAL ( 2\* 1 LT )

POLYCONE SILICONE DUPLICATING MATERIAL is used for any duplication requiring the ultimate in accuracy. Mixing Ratio is 1 part base to 1 part catalyst by volume or weight. Each bottle contains 1 lt of material

**ORDER : 6040**



## SILICONE BASED LUBE WAX

BILKIM Lube Wax is a unique lubricant designed to make burs,gravers, drill bits, saw blades and other cutting and abbrasive tools work smoother and last longer. Reduces friction and damaging heat

**ORDER NO** : 650  
**COLOR AVAILABLE** : WHITE, LIGHT BLUE



## SHELLAC BASE PLATE (100 PCS)UPPER

The POLYFLEEX SHELLAC BASE PLATE is very heat resistant which prevents the plate from overheating.It is easily adap on heating and easy to work with. Retain the shape stability and do not warp back on cooling. Easy to form and adaptable

**ORDER NO** : 2900



### 3 D SCANNING SPRAY

Our 3 D SCAN SPRAY is perfect for achieving optimal accuracy and results with 3D laser scanning. It can also be used to apply as an anti-reflection.

**ORDER NO :** 2225 : 2230  
**UNIT :** 0,200 ml : 0,500 ml



### POLILUBE LUBRICATION SPRAY FOR HANDPIECES

The POLI LUBE LUBRICATION SPRAY possesses excellent cleaning and lubricating properties that prolongs the working life of your dental handpieces.

**ORDER NO :** 5221/250 5221/500  
**UNIT (200 ML) (500 ML)**



### MOLD RELEASE SPRAY (SILICONE BASED)

The SILICONE BASED MOLD RELEASE SPRAY is perfect for separation between wax-plastic, wax-wax, gypsum-wax. Available in bottles of 500 ml.

**ORDER NO :** 6044  
**UNIT :** 0,500 ml



### OCCULSION SPRAY

The OCCLUSION SPRAY are universal colour indicator to test the occlusal contacts and accurate fit of crowns and bridges. Easy to handle and leaves a thin colored film which can easily be removed with water, leaving no trace of residues

**ORDER NO :** 2228  
**UNIT :** 0,100 ml  
**COLOR AVAILABLE :** BLUE, RED, GREEN



## POLICID ELECTROLYTE FOR CHROME-COBALT ALLOYS

For polishing chrome-cobalt alloys. Solution is ready to use

**ORDER NO** : 1002

**UNIT** : 5 LT & 1 LT

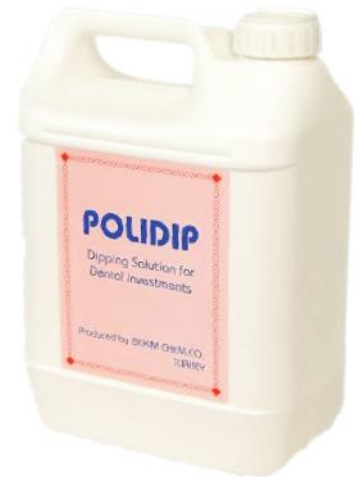


## POLIDIP DIPPING SOLUTION FOR INVESTMENT (HARDENER)

The POLIDIP is the best in the market to be used as dipping solution for investment.

**ORDER NO** : 1001

**UNIT** : 5 LT & 1 LT



## POLISIL MIXING LIQUID

The POLISIL is the best mixing liquid in the market to be used for metal and ceramic.

**ORDER NO** : 1003: FOR METAL CERAMIC

1003/1 : FOR Cr-Co

**UNIT** : 5 LT & 1 LT



## DUPLICATING GEL

The DUPLICATING GEL is used for phosphate bonded investment, gypsum and self curing acrylic dental materials. It can be reheated and reused.

**ORDER NO** : 6050  
**UNIT WEIGHT** : 5 Lt  
**COLOR AVAILABLE** : BLUE, GREEN



## MICRO GLASS BEADS

This is perfect to be used for fine surface of metal, porcelain and acrylics. Rough surface preparation. Smoothing and polishing surfaces.

**ORDER NO** : 6036  
**UNIT WEIGHT** : 3 KG; 5 KG  
**TYPE AVAILABLE** : 50; 80; 110; 120; 150 and 250 Micron



## POLIMICE - PUMICE

The POLIMICE PUMICE is refined from top grade volcanic rock of homogenous which result with the finest light and permeable abrasive you can find.

**ORDER NO** : 1300  
**UNIT WEIGHT** : 1 KG ; 2,5 KG; 5 KG; 25 KG; 50 KG  
**TYPE AVAILABLE** : 45; 120, 150 MICRON



## SAND BLASTING MATERIAL

The Sand blasting material is a blend of Aluminium oxide and other additive to be used for fine surface of metal, porcelain and acrylics. Rough surface preparation. Smoothing and polishing surfaces.

**ORDER NO** : 6035  
**UNIT WEIGHT** : 5 KG  
**TYPE AVAILABLE** : 50; 80; 120; 150 and 250 Micron



## POLY CAST – CR-NI CASE METAL ALLOY FOR METAL CERAMIC

The BILKIM Nickel based alloys (non-precious) are used for making dental prosthesis. They are economical alternative to Gold & Silver based alloys (precious) but perform well due to their mechanical properties and biocompatibility.

**ORDER NO** : 6010  
**UNIT WEIGHT** : 1,000 KG



## POLY CAST – CO-CR COBALT CHROME FOR CASTING ALLOY

The BILKIM Cobalt Chromium (non-precious) are used for making dental prosthesis. They are economical alternative to Gold & Silver based alloys (precious) but perform well due to their mechanical properties and biocompatibility.

**ORDER NO** : 6011 : INGOT SHAPE  
: 6011/1 : SHOT SHAPE  
**UNIT** : 1,000 KG



## CRUCIBLES

The CRUCIBLES are can be used for a long time without cracking. Alloy do not stuck on the surface of the crucible and they are Thermal shock resistant. B11,B22, B33, B44, B55 types available

**ORDER NO** : 3010



## MOUNTING PLATES

The Bilkim mounting plates enable for fast, exact, and can be easily placed on and removal of mounted castings on numerous of the foremost well-known semi and fully adjustable articulators

### COMPATIBLE MAGNETIC MOUNTING PLATES

**ORDER NO** : MP185

**COLOR AVAILABLE** : WHITE

MP 185  
Compatible magnetic  
mounting plates



### COMPATIBLE MOUNTING PLATES

**ORDER NO** : MP186

**COLOR AVAILABLE** : WHITE

MP 186  
Compatible  
mounting plates



### COMPATIBLE SPLIT MOUNTING PLATES

**ORDER NO** : MP195

**COLOR AVAILABLE** : WHITE

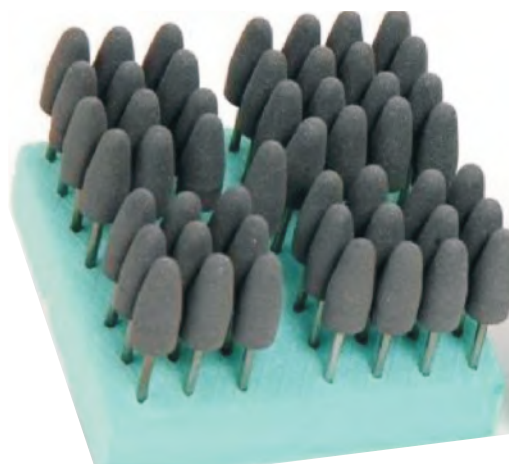
MP 195  
Compatible split  
mounting plates



## SILICONE POINTS (HP TYPE)

The HP SILICONE POINTS are applied on acrylic to acquire a high and glossy appearance. They have optimum abrasive property.

**ORDER NO** : 1710

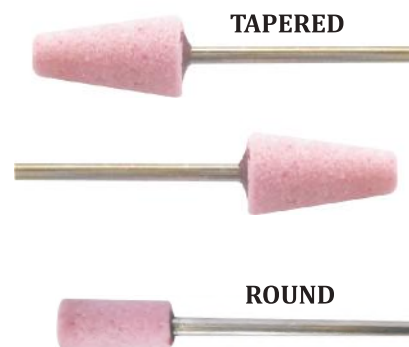


## STONE POINTS FOR ALLOY

The Stone points are suitable for alloy. They have optimum abrasive property.

**ORDER NO** : 1711

**TYPE AVAILABLE** : TAPERED, ROUND



## CHAMOIS LEATHER WHEEL

Designed for high shine polishing of plastic prosthetics, composites, crown and bridge work made of precious and non-precious metal and CrBCo with polishing paste.

**ORDER NO** : 2810



## FELT WHEEL

The POLYWAX FELT WHEEL is perfect for polishing of ceramics and composites.

**ORDER NO** : 2815



## COTTON WHEEL

The POLYWAX COTTON WHEEL is ideal for high shine polishing of plastic prosthetics, composites, crown and bridge work made of precious and nonprecious metal and chromium cobalt.

**ORDER NO** : 2811



## MANDREL

Our MANDREL are among the best in the market.  
Optimum stainless steel dental finisher/polisher.

**ORDER NO** : 1400



## BUFFS

The POLYWAX BUFFS are ideal for  
the use of polishing of acrylics.

**ORDER NO** : 1800



## LEATHER TYPE BUFFS

The POLYWAX BUFFS - LEATHER are ideal for the  
use of polishing of acrylics.

**ORDER NO** : 1801



## POLISHING COMPOUND

**7801 (RED)** : Excelent for removing scratches on metals  
and acrylics by fast cutting . Suggested use  
prior to final polishing. High mirror finish.

**7802 (BLUE)** : Steel, stainless steel and Non-precious  
metals such as copper and brass. Removal of  
scratches, cleaning, and a high luster finish.

**7803(WHITE)** : Silver, white Gold & Plastics. Pre-Polish and  
polish to a high luster finish.

**7804 (GREEN)** : Recommended for finish of all a White Metals and  
Hard Metal Alloys.



## FINISHING DISC FOR PORCELLAIN

The POLYWAX FINISHING DISC are ideal for the use of polishing of porcellain.

**ORDER NO** : 3300



## SEPARATING DISC FOR METAL ALLOY

The BILKIM Separating Disc, is a specially deisgned for Metal Alloy. The Disc ensures maximum durabilityy and performance.

**Dia. 38 mm.**

**Thickness: 1.0 MM**

**1 Box has 50 pcs.**

**ORDER NO** : 3305



## SEPARATING DISC FOR METAL ALLOY (Fiber Glass Reinforced)

The BILKIM Separating Disc, is a specially designed for Metal Alloy, it is reinforced with fiber glass and ensures maximum durability and performance.

**Dia. 38 mm.**

**Thickness: 1.0 MM**

**1 Box has 50 pcs**

**ORDER NO** : 3310



## DENTAL STONE - GYPSUM

POLYSTONE DENTAL STONE has excellent consistency, minimum shrinkage and very low grain size to provide the perfect model. It has fast curing property and high hardness value.



### POLYSTONE DENTAL STONE TYPE III

ORDER NO : 6225  
COLOR AVAILABLE : VARIOUS



### POLYSTONE HARD DENTAL STONE TYPE IV

ORDER NO : 6230  
COLOR AVAILABLE : VARIOUS



### POLYSTONE SUPER HARD DENTAL STONE TYPE V

ORDER NO : 6340  
COLOR AVAILABLE : VARIOUS





# BEAUTY PRODUCTS



## BEAUTY PRODUCTS

### DEPILATORY WAX

The Polywax hard wax is a full body depilatory wax .

The Polywax hard wax can be applied safely in areas of the body such as the face and the delicate areas

#### BLOCK FORM

**ORDER NO** : 1500  
**UNIT WEIGHT** : 0,500 KG

#### BEADS FORM

**ORDER NO** : 1505 **COLOR** : VARIOUS  
**UNIT WEIGHT** : 0,250 KG





# PRECISION CASTING WAXES



## PRECISION CASTING WAXES

### POLYWAX INVESTMENT CASTING WAX

Casting Wax enables you to reproduce finely detailed cast replicas of original works of art, jewelry, and prototypes.

Industry sectors served include Aerospace, Industrial Gas Turbines, Medical, Automotive Defense, Communications, Microwave, Electronics, Marine, Sport & Leisure, Construction, Jeweler.

**ORDER NO** : 4200  
**COLOR** : VARIOUS



### WATER SOLUBLE PRECISION CASTING WAX

The Polywax water soluble wax for precision casting can be used to achieve internal cavity in a casting and is perfectly suited for making hollow items in Jewelry casting and lost wax casting.

**ORDER NO** : 4300  
**COLOR** : VARIOUS



### POLYWAX DISCLOSING WAX

The POLYWAX Disclosing wax is a creamy type wax designed to be in reparation defect in Wax Pattern. It is also applicable for determining the fit of partial or full denture to relation to supporting tissue.

**ORDER NO** : 4400



A hand holding a globe with network icons, overlaid on a diamond grid pattern. The background is a solid blue color with a white wavy line separating the top image from the text area.

# JEWELRY SECTION



## INJECTION WAXES

### SUPERFLEX

Polywax SuperFlex is extremely hard and tough.  
This wax is good for fine details and ideal for metal molds.  
Melting Point: 78-80 °C.  
A bag contains 1 kg material

**ORDER NO** : 2800/100



### DUALFLEX

Polywax Dual Flex provides reproduction of extra fine details and ideal for both thin or thick sections. Melting point: 72- 74 °C.  
A bag contains 1 kg material.

**ORDER NO** : 2800/400



### EASYFLEX

Polywax EasyFlex provides very high performance in higher ambient temperatures and yields a bright, shiny surface. Melting Point: 76- 78 °C.  
A bag contains 1 kg of material

**ORDER NO** : 2800/300



## UV ENAMEL

The POLYMEL UV ENAMEL is a cold enamel that cures the enamel with UV light which is easily applicable for jewelry coloring and decoration and cures under UV light within 1-2 minutes. The cured enamel is hard, wear-resistant, easily drilled and polished. Different color options available.

One jar has 20 gr of UV enamel.



### OPAQUE SERIES

Order no : 248



### PHOSPHORUS SERIES

Order No : 251



### PEARL SERIES

Order no : 249



### TRANSPARENT SERIES

Order no : 250

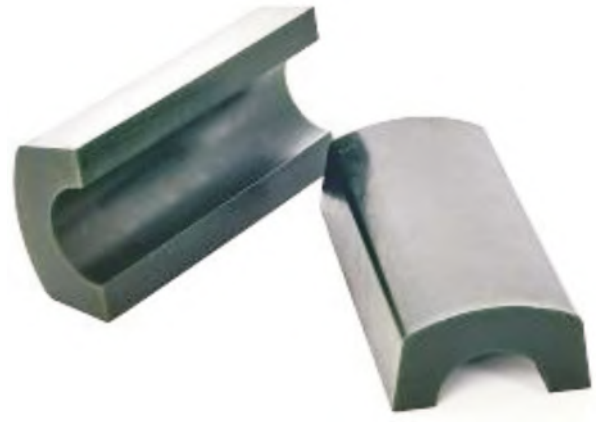


## CARVING AND MILLING WAXES

The POLYWAX BRACELET WAX is formulated to meet the requirements of professional wax carvers and satisfy a variety of carving needs in order to reduce preparation time.

Available in blue and green color which has the same properties.

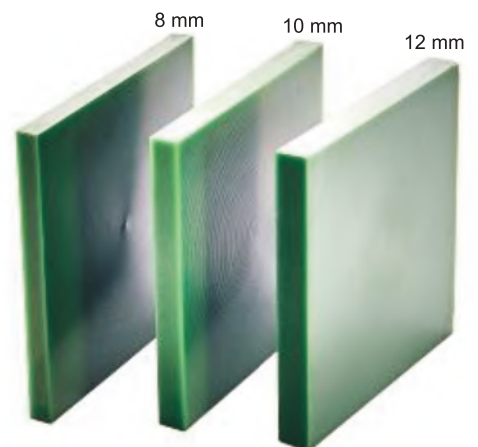
**ORDER NO** : 254/9



The POLYWAX STANDARD SHAPE is formulated to meet the requirements of variety of jewelry pattern making applications.

Available in different thicknesses.

**ORDER NO** : 254/1



The POLYWAX STANDARD SHAPE is formulated to meet the requirements of variety of jewelry pattern making applications.

**ORDER NO** : 254/2



**POLYWAX TUBES AND RODS**

Available in individually packaged solid bars, round tubes, and flat- side tubes. all ring tubes and solid bars have a length 152,4 mm long and can be easily cut the required length.  
Available in blue and green color which has the same properties.

**RING TUBE**  
**SOLID BAR- Dia. 28.5 mm**  
Order no: 254/0



**RING TUBE**  
**FLAT-TOP**  
Order no: 254/5



**RING TUBE**  
**SOLID BAR Dia. 32.5 mm**  
Order no: 254/6



**RING TUBE**  
**SOLID BAR CENTER HOLE**  
Order no: 254/7



**RING TUBE**  
**OFF-CENTER HOLE**  
Order no: 254/8



## NOTES



## NOTES



*Global Supplier...*



**BİLKİM**  
POLYWAX & PERFECTWAX



1212/1. Sokak No: 1/1, 35660  
Menemen/ İZMİR, TURKEY



90 (232) 329 7094 - 7027

90 (530) 381 7810



info@bilkimya.com

sales@bilkimya.com

contact@bilkimya.com